

CHAMOT

Recombinant Human GM-CSF

CM115-5HP
CM115-20HP
CM115-100HP
CM115-500HP
CM115-1000HP



CHAMOT

喬默生物技術(上海)有限公司
CHAMOT BIOTECHNOLOGY CO., LTD.

CONTENT

1 产品简介

2 产品组成

3 产品储存

4 产品使用

Recombinant Human GM-CSF(granulocyte-macrophage colony stimulating factor)

编号:	CM115-5HP CM115-20HP CM115-100HP CM115-500HP CM115-1000HP	规格:	5 µg 20 µg 100 µg 500 µg 1 mg
类别:	重组蛋白	应用:	Functional Assay

产品简介

描述: Granulocyte-macrophage colony-stimulating factor (GM-CSF), also known as colony-stimulating factor 2 (CSF2), is a monomeric glycoprotein secreted by macrophages, T cells, mast cells, natural killer cells, endothelial cells and fibroblasts that functions as a cytokine. GM-CSF also plays a role in embryonic development by functioning as an embryokine produced by reproductive tract.

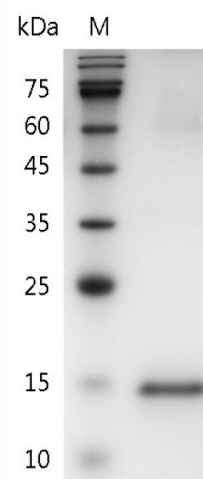
来源: *Escherichia coli*

纯度: >98% as determined by SDS- PAGE and SEC-HPLC.

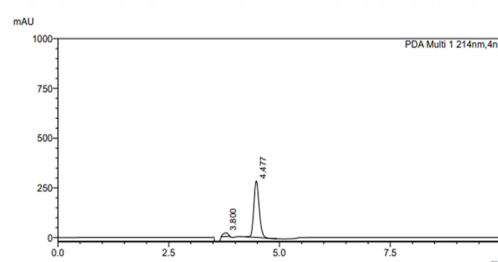
生物学活性: Measure by its ability to induce TF-1 cells proliferation. The ED₅₀ for this effect is < 80 pg/mL. The specific activity of recombinant human GM-CSF is approximately $>1 \times 10^7$ IU/mg.

内毒素检测: < 0.1 EU per 1 µg of the protein by the LAL method.

蛋白序列: APARSPSPSTQPWEHVNAIQEARLL
NLSRDTAAEMNETVEISEMFDLQEP
TCLQTRLELYKQGLRGSCLKLKGPLT
MMASHYKQHCPPTPETSCATQIITFE
SFKENLKDFLLVIPFDCWEPVQE with
polyhistidine tag at the N- terminus



SDS-PAGE analysis of recombinant human GM-CSF



The purity of recombinant human GM-CSF is greater than 98% as determined by SEC-HPLC.

产品组成

成分： 从含有 1X PBS, pH 8.0 溶液中冻干的蛋白质。

产品储存/运输

产品形式	储存温度	储存时间
冻干粉	-20℃至-80℃	自收到之日起1年
重悬液 (初始)	2℃至8℃	不超过1周
重悬液 (经稀释)	-20℃至-80℃	3到6个月

运输方式： 蓝冰

产品使用

- 1、开盖前，建议3000-3500rpm离心5min。
- 2、推荐使用无菌水重悬冻干粉，溶液浓度不低于100μg/mL，不高于1mg/mL，并室温静置至少20min以充分溶解。勿涡旋剧烈振荡。
- 3、重悬后的溶液，2-8℃无菌保存不超过1周。
- 4、如需长期保存，推荐使用无菌的含载体蛋白（如0.1%BSA、10%FBS或5%HSA）的溶液进一步稀释（不低于10ug/mL）后分装保存，-20℃至-80℃可无菌保存3到6个月。无血清实验需求时，可更换为5%海藻糖溶液作为载体。避免反复冻融。

WB= Western Blot; IP= Immunoprecipitation; IF= Immunofluorescence; IHC= Immunohistochemistry;
FACS= Fluorescence activated Cell Sorting; FA= Functional Assay